

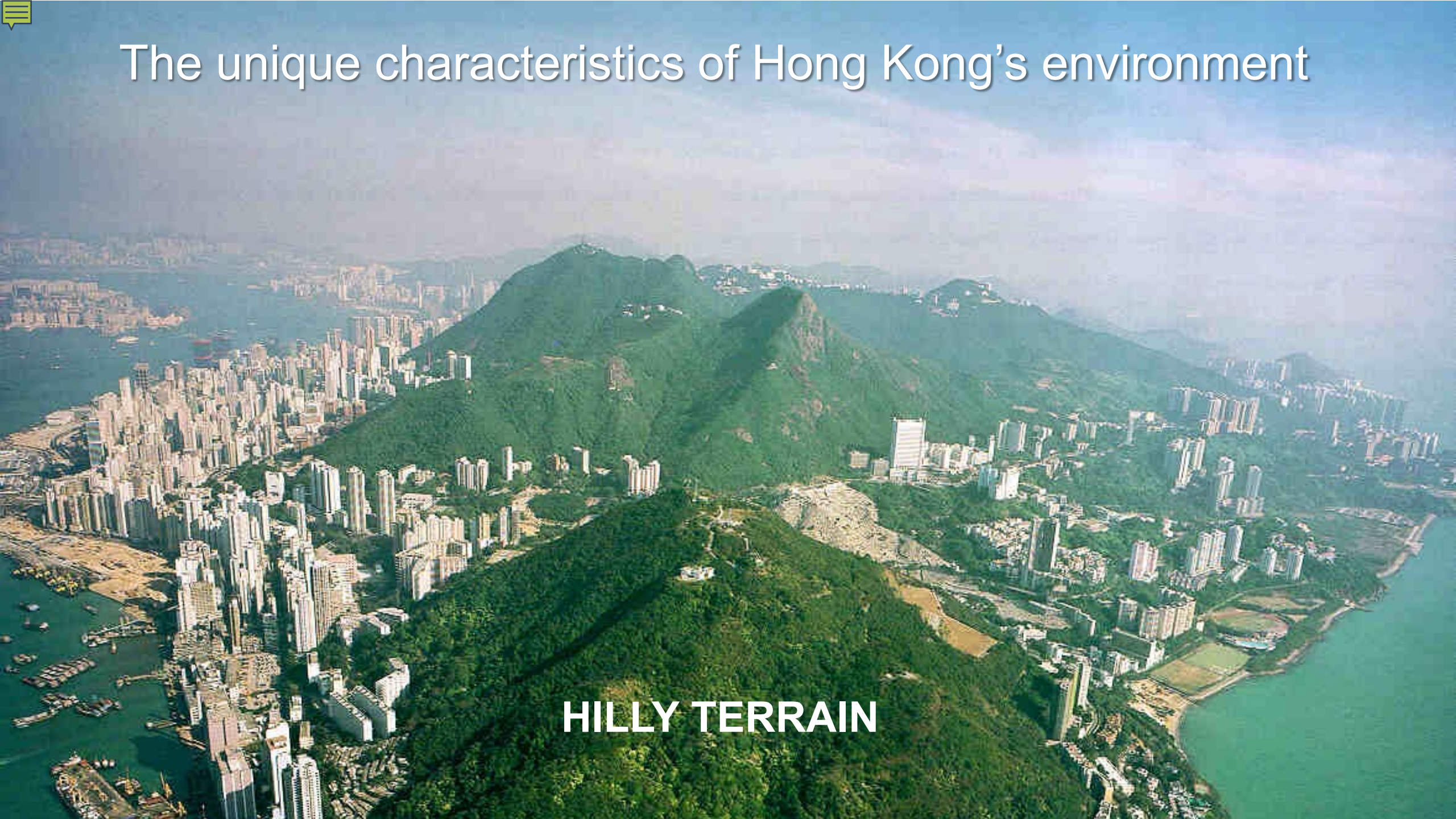


# LAND USE PLANNING FOR CONTROLLING LANDSLIDE RISK FOR SUSTAINABLE DEVELOPMENT IN HONG KONG

**Ir Jenny F Yeung**  
**Hong Kong Institution of Engineers**  
**Yeungfeijenny@gmail.com**



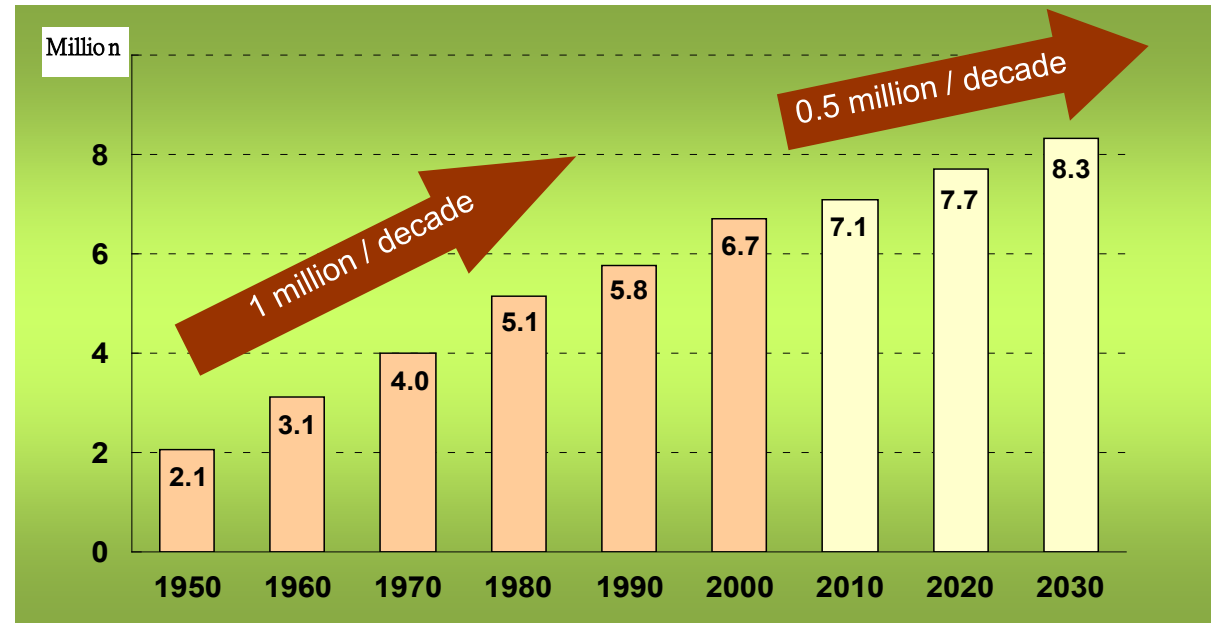
# The unique characteristics of Hong Kong's environment



**HILLY TERRAIN**



# Population Growth





# HEAVY RAINFALL



on.cc  
東網

Annual average  
2,400 mm







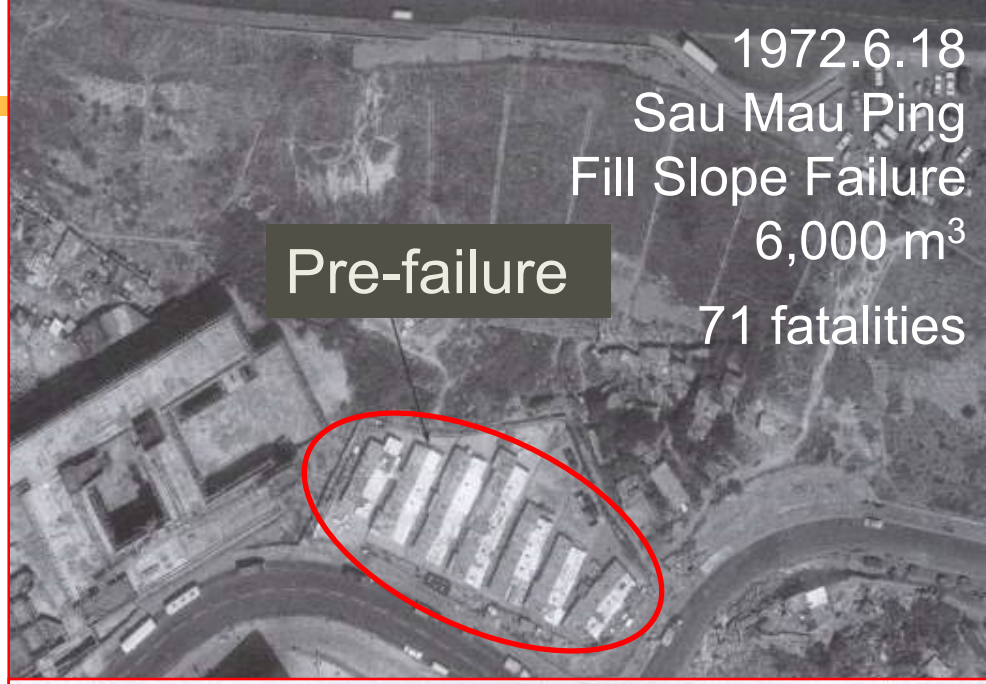
# Rapid Urbanisation - Lack of Geotechnical Standards and Control before 1977







# HISTORY OF TRAGIC LANDSLIDES



1972.6.18  
Sau Mau Ping  
Fill Slope Failure  
6,000 m<sup>3</sup>  
71 fatalities

Pre-failure



Post-failure





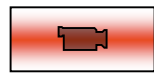
1972.6.18  
Po Shan Road  
20,000 m<sup>3</sup>  
67 fatalities



Pre-Failure



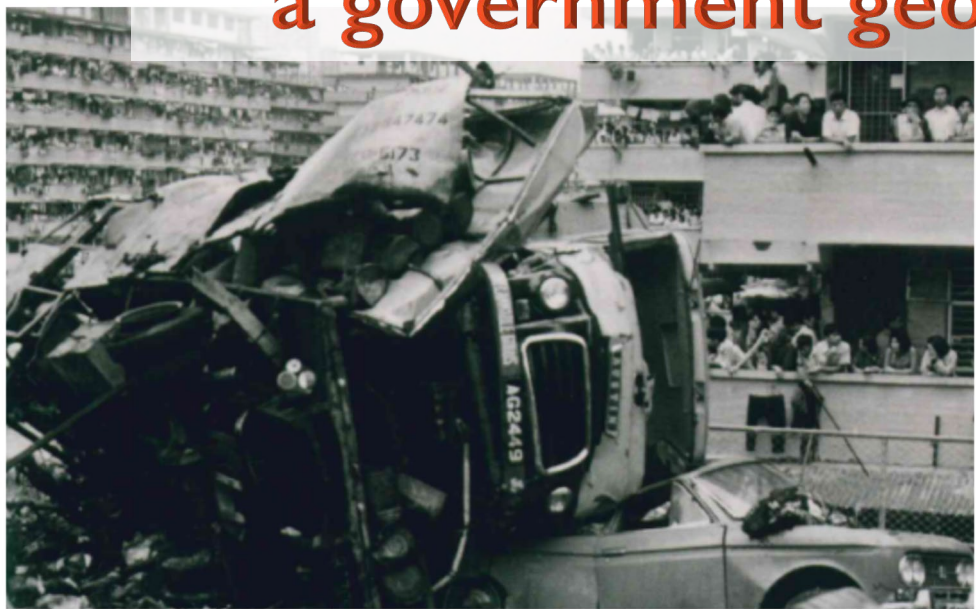
Post-Failure





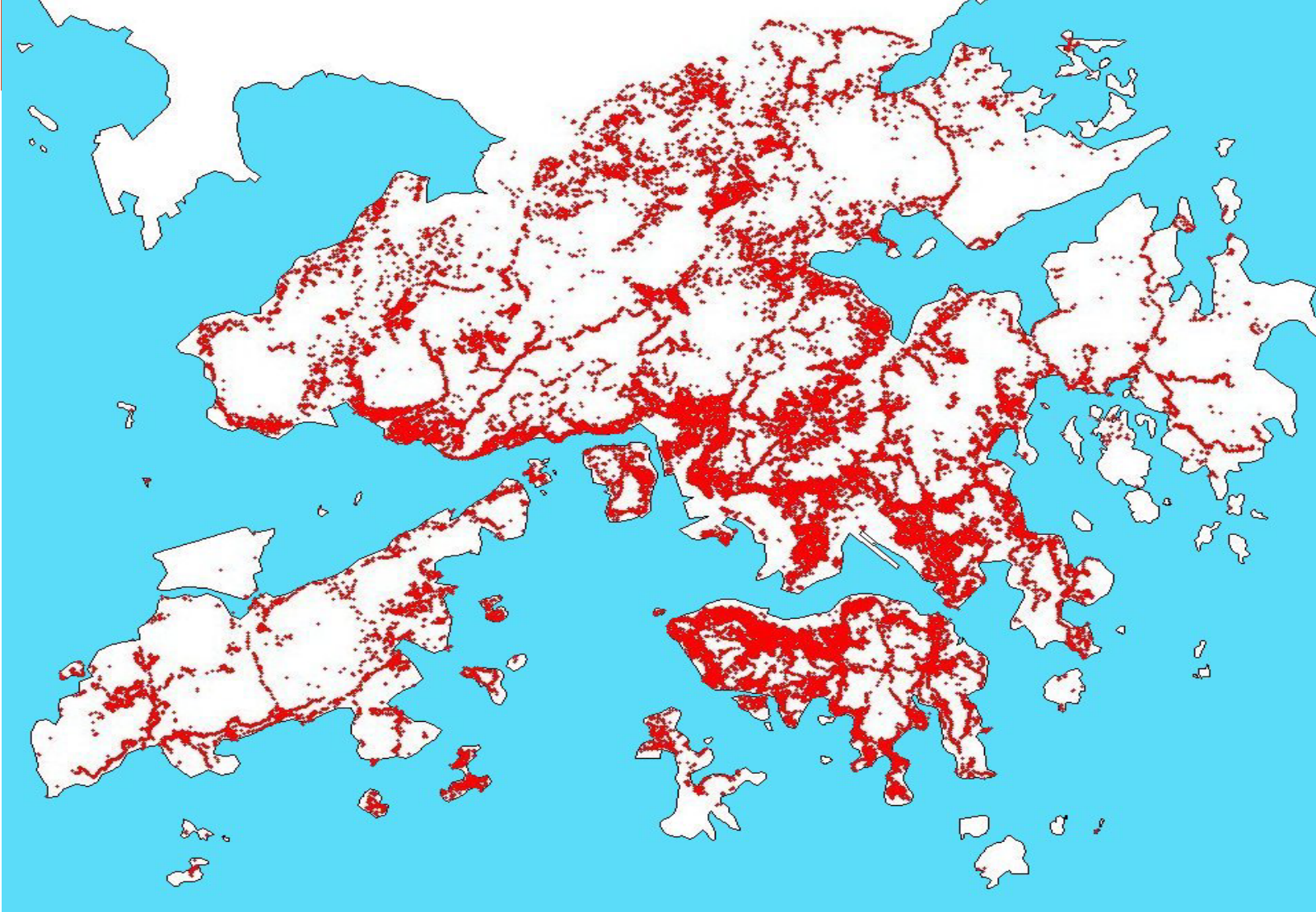


**Call for the establishment of  
a government geotechnical control body**





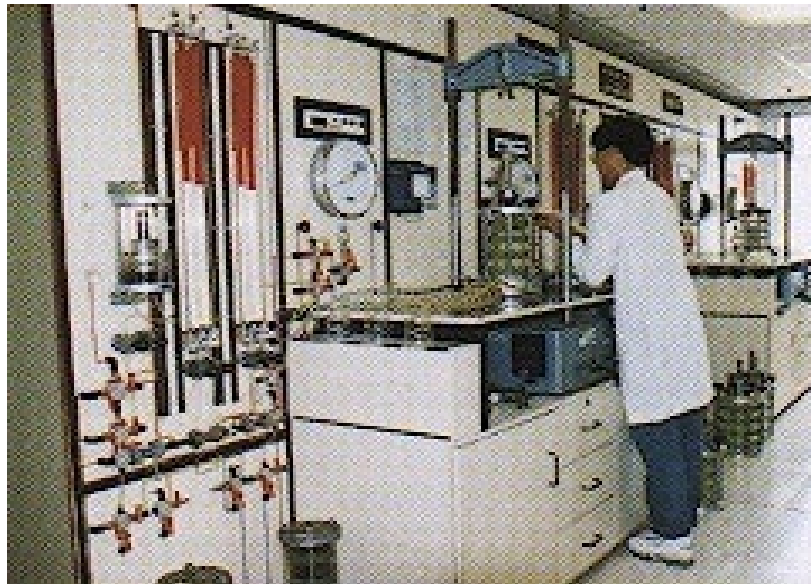
## Distribution of Man-made Slopes in Slope Information System



**Total no. of sizeable man-made slopes : 60,000**  
**Government slopes : 40,000**  
**Private slopes : 20,000**



# Setting geotechnical standards and practice





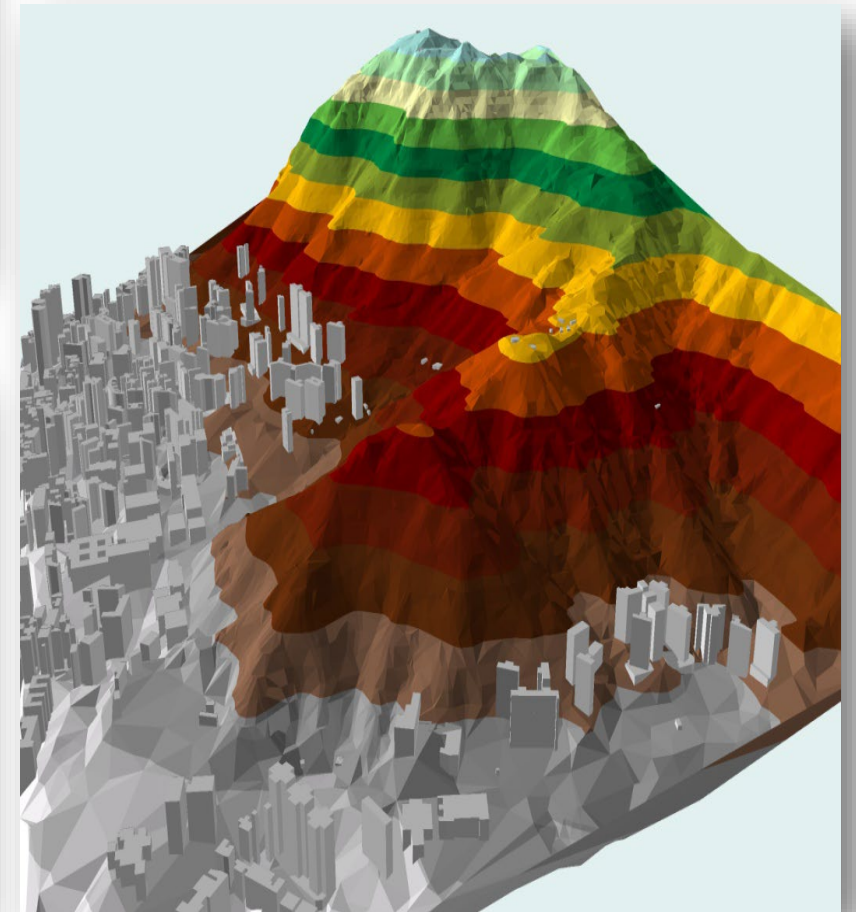
# Containing Risk by Geotechnical Control

Private developments

→ Statutory power

Public works

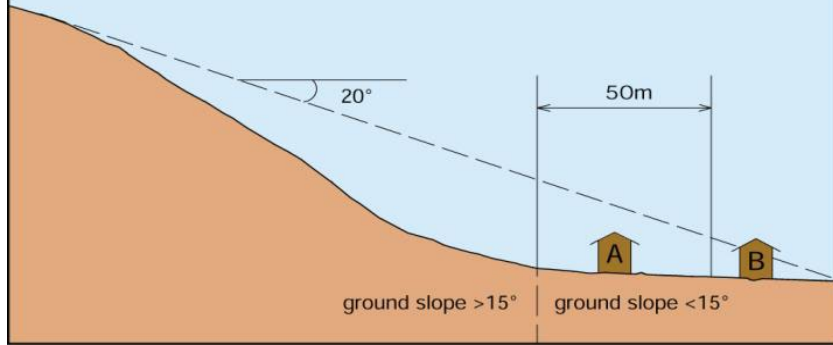
→ Administrative instrument





## For sites that may be affected by natural terrain hazards

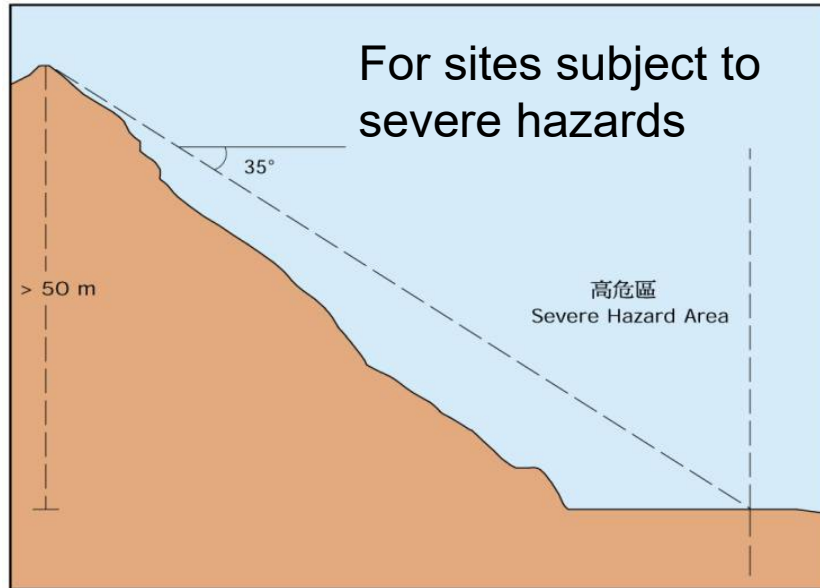
- A - Study Required 需要進行研究
- B - Study Not Required 不需要進行研究



### Study and mitigation of hazards required

### "Natural Terrain Hazard Study" Criteria

For sites subject to severe hazards



In-principle Objection to development proposal

"In-principle Objection" Criteria

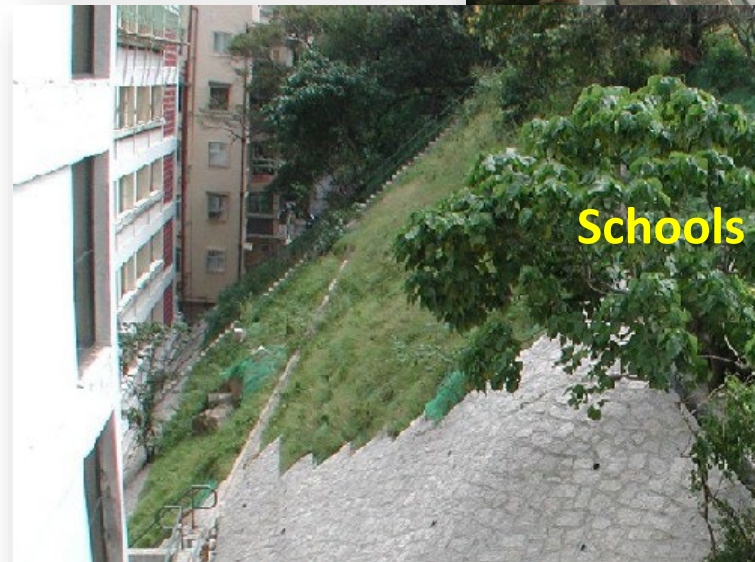
# Planning and Land Disposal Stage



Screening Criteria for New Developments

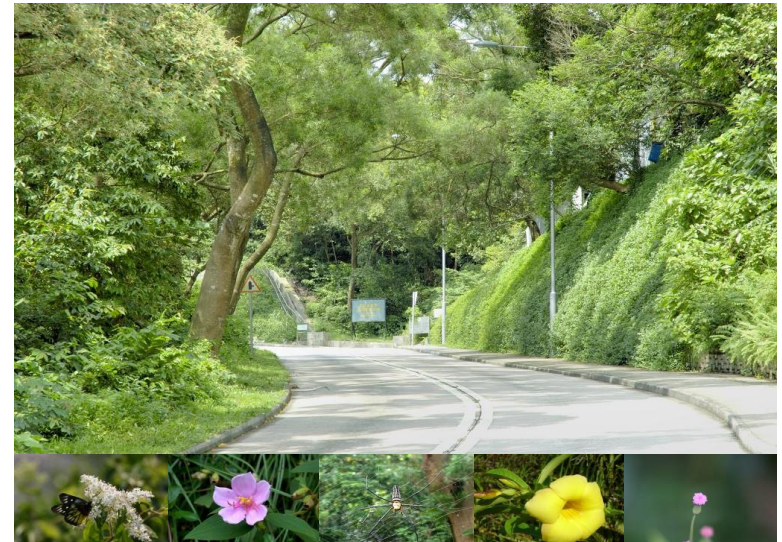
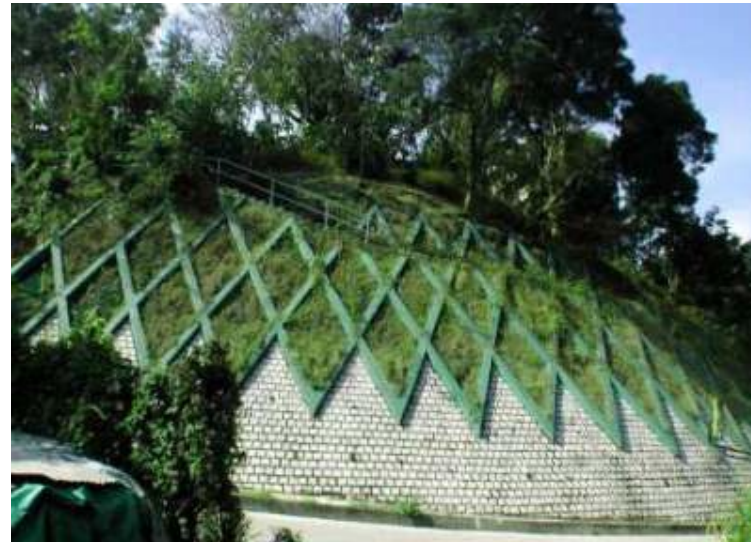
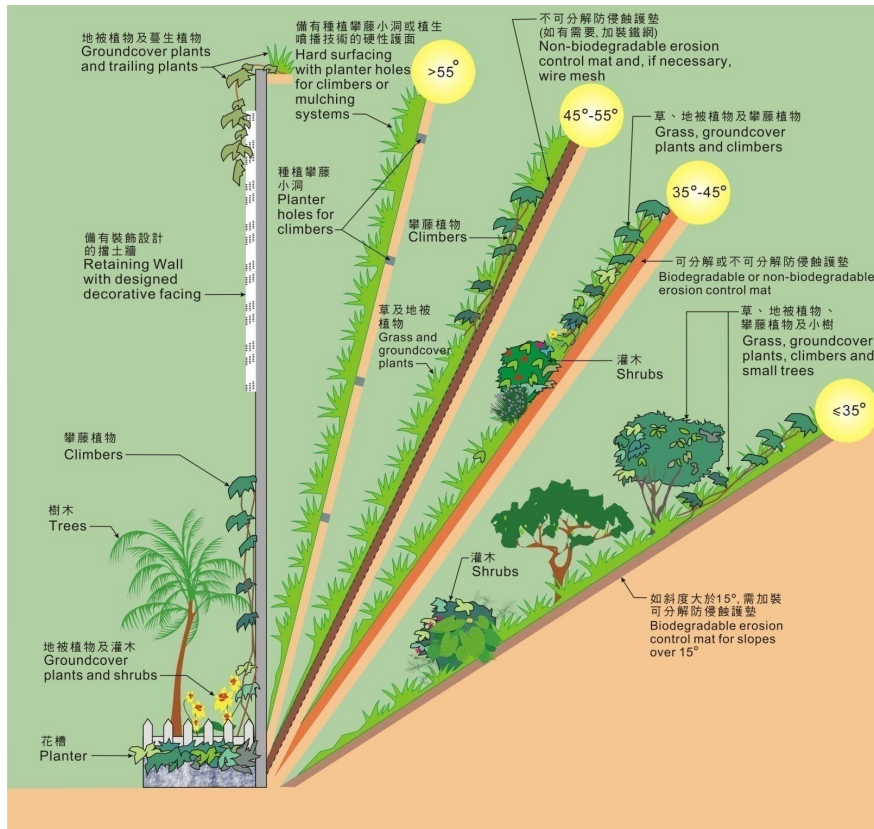


# Reducing Risk Imposed on Existing Developments





# Enhancing aesthetics of upgraded slopes





# Minimising Consequence of Landslides



Community Advisory Service



Community Advisory Unit (CAU)



Meet the public



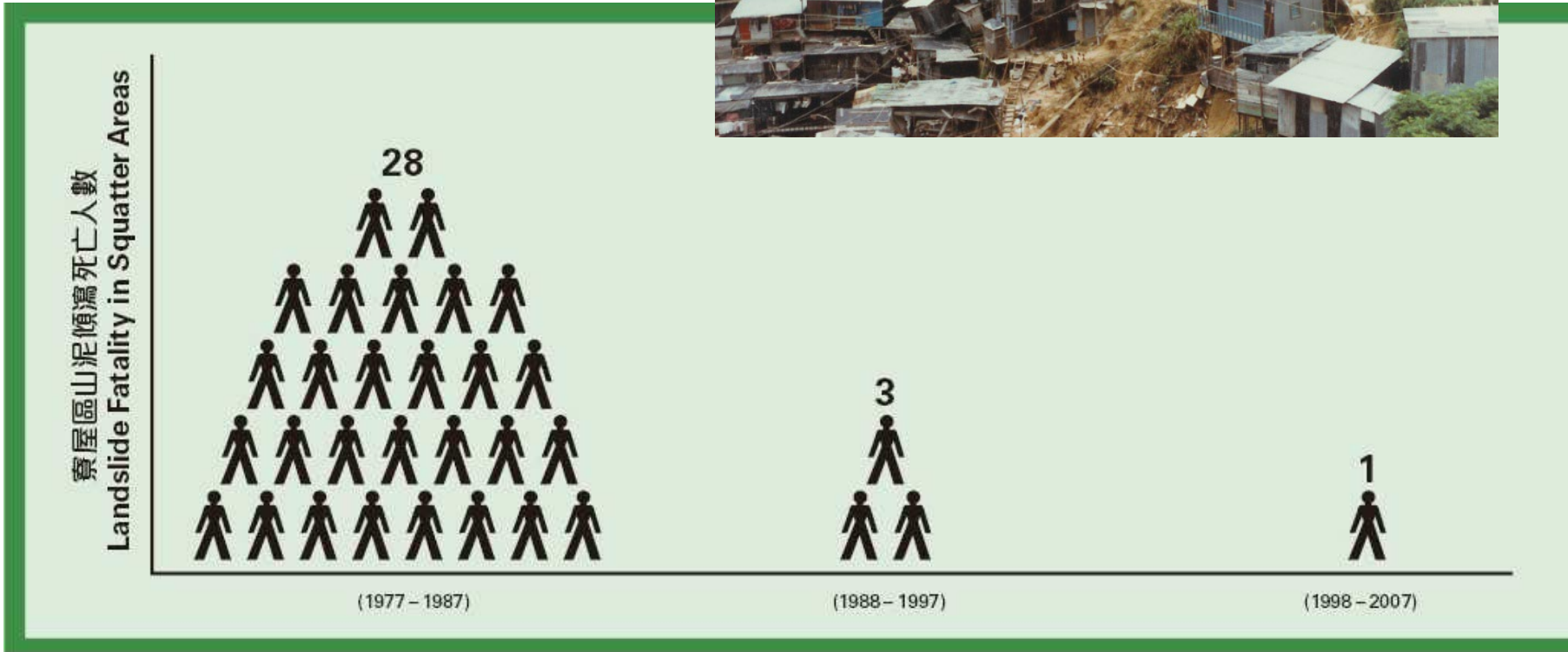
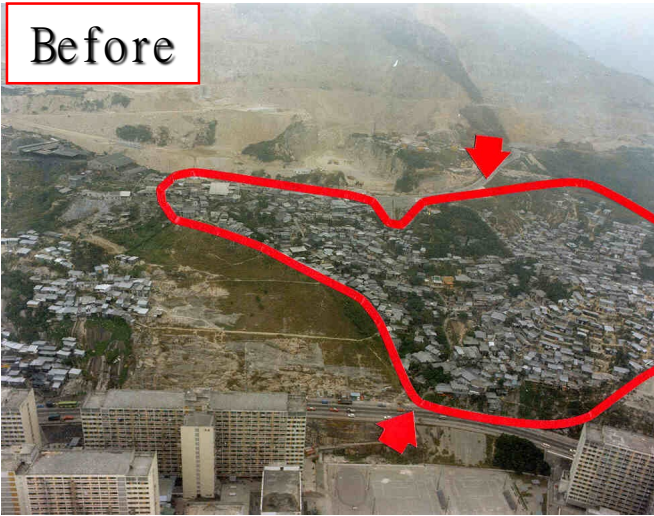
Public Seminars



Guidance Publications



# Reducing risk by clearing squatters





# Landslide risk reduced to less than 25% of 1977 level

